



THE THOMPSONS'S SPECIALIZED APPLICATION SCRIPTS SUITE

MICHAEL THOMPSON, MD, & LYNDA THOMPSON, PHD



Limited Edition Software Suite - for ProComp Infiniti encoder

Michael Thompson, M.D., and Lynda Thompson, Ph.D., are well known in the biofeedback and neurofeedback communities as being two of the top leaders in clinical knowledge, experience, expertise and training. This suite was designed by Thompsons and their staff at their ADHD Center in Toronto, Canada, as a tool for the treatment of clients using pre-defined, time-fixed protocols. Professionals, educators and researchers who want to use biofeedback and/or neurofeedback with a general population will greatly benefit from this suite. In terms of software, the suite includes:

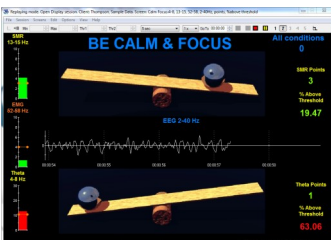
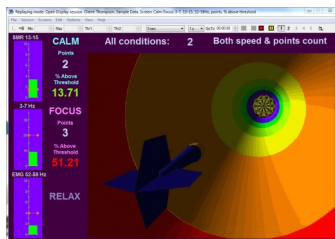
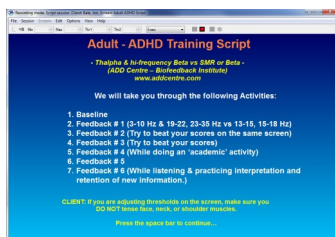
- 20 pre-defined protocols for ProComp Infiniti encoder, with instructions embedded directly in the scripts
- Scripts are used with 1 and 2-monitor setups
- A technical guide written by the Thompsons, that outlines each script.

Assessment protocols include:

- Psychophysiological Stress Assessment
- 1 Hz Bins EEG Assessment

Training protocols include the following conditions:

- Seizure Disorder (2 scripts)
- ADHD for children and adults (4 scripts)
- Asperger's with HRV training
- Asperger's with Autistic Spectrum (2 scripts)
- Attention & Asperger's (2 scripts)
- Dyslexia (2 scripts)
- Depression (3 scripts - mild-moderate, moderate, agitated)
- Optimal Performance (2 scripts)



Education & Training Opportunities

The BFE offers two different types of online lessons/meetings designed to meet your diverse education and training needs. All sessions provide continuing education (CE) credits to psychologists.

- **1-Hour Introduction to the Specialized Application Scripts Suite Webinar:** Jon Bale, BFE Research Manager, reviews the software script included in the Specialized Application Scripts Suite. The webinar covers the following items; authors, goals of the suite, the biofeedback and neurofeedback measurements, each included script and contextual use.

• **6-Hour Specialized Application Scripts Class:** online instruction from a qualified instructor on biofeedback & neurofeedback assessments and training for wide range of disorders. This class is well suited for beginners or experienced practitioners that want to use Thompsons' "Specialized Application Scripts" methods in their practice. All aspects of using the software will be covered in great detail, and recorded data will be reviewed to ensure proper recording. Interpretation of data by the instructor will occur, however focus is maintained on being able to successfully use all aspects of the software and equipment.

Other Software Suite by the Thompsons

The Thompsons' have also designed a second, separate software suite called **Setting Up For Clinical Success**. This suite allows for a wide arrangement of open session training sessions, to suite a wide range of clinical conditions and disorders. The Setting Up For Clinical Success suite can provide the open mobility for treatment using biofeedback and neurofeedback.



For more Information or Questions: To purchase the suite and/or education & training, go to the BFE Shop:

blueadhd@gmail.com

www.bfe.org/buy



THE THOMPSONS'S SPECIALIZED APPLICATION SCRIPTS SUITE

MICHAEL THOMPSON, MD, & LYNDA THOMPSON, PHD



Limited Edition Software Suite - for ProComp 2 encoder

Michael Thompson, M.D., and Lynda Thompson, Ph.D., are well known in the biofeedback and neurofeedback communities as being two of the top leaders in clinical knowledge, experience, expertise and training. This suite was designed by Thompsons and their staff at their ADHD Center in Toronto, Canada, as a tool for the treatment of clients using pre-defined, time-fixed protocols. Professionals, educators and researchers who want to use biofeedback and/or neurofeedback with a general population will greatly benefit from this suite. In terms of software, the suite includes:

- 12 pre-defined protocols for ProComp 2 encoder, with instructions embedded directly in the scripts
- Scripts are used with 1 and 2-monitor setups
- A technical guide written by the Thompsons, that outlines each script.

Training protocols include the following conditions:

- Seizure Disorder (1 script)
- ADHD for children and adults (4 scripts)
- Asperger's with Autistic Spectrum (2 scripts)
- Attention & Asperger's (1 script)
- Dyslexia (1 script)
- Depression (2 scripts - moderate, agitated)
- HRV Training (1 script)

Education & Training Opportunities

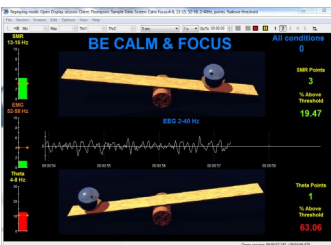
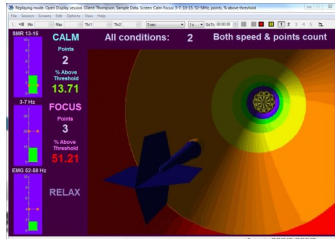
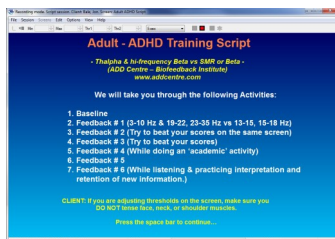
The BFE offers four different types of online lessons/meetings designed to meet your diverse education and training needs. All sessions provide continuing education (CE) credits to psychologists.

- **1-Hour Introduction to the Specialized Application Scripts Suite Webinar:** Jon Bale, BFE Research Manager, reviews the software script included in the Specialized Application Scripts Suite. The webinar covers the following items; authors, goals of the suite, the biofeedback and neurofeedback measurements, each included script and contextual use.
- **6-Hour Specialized Application Scripts Class:** online instruction from a qualified instructor on biofeedback & neurofeedback assessments and training for wide range of disorders.

This class is well suited for beginners or experienced practitioners that want to use Thompsons' "Specialized Application Scripts" methods in their practice. All aspects of using the software will be covered in great detail, and recorded data will be reviewed to ensure proper recording. Interpretation of data by the instructor will occur, however focus is maintained of being able to successful use all aspects of the software and equipment.

Other Software Suite by the Thompsons

The Thompsons' have also designed a second, separate software suite called **Setting Up For Clinical Success**. This suite allows for a wide arrangement of open session training sessions, to suite a wide range of clinical conditions and disorders. The Setting Up For Clinical Success suite can be provides the open mobility for treatment using biofeedback and neurofeedback.



For more Information or Questions: To purchase the suite and/or education & training, go to the BFE Shop:

blueadhd@gmail.com

www.bfe.org/buy



THE THOMPSONS'S SPECIALIZED APPLICATION SCRIPTS SUITE

MICHAEL THOMPSON, MD, & LYNDA THOMPSON, PHD



BioGraph Infiniti Software

BioGraph Infiniti Software is the core of all current and future Thought Technology biofeedback and psychophysiology products. It provides a multimedia rich graphical experience, while capturing and analyzing raw data. It includes all the features and functions required to run our specialized suite and offers the ability to customize your own screens using the Developer Tool. The suite functions with **BioGraph Infiniti version 5.1.4 or 6.0**, and is designed to provide full compatibility with the latest Windows 8 operating system.



Choose the Encoder to Meet Your Needs

You only need one of the encoders to run the software:

- **ProComp Infiniti encoder** is the multi-modality encoder that provides real-time, computerized biofeedback and data acquisition in any clinical setting. It records data from up-to eight sensors simultaneously.
- **ProComp2 encoder** is a compact, version of the ProComp Infiniti encoder. ProComp 2 contains a built-in EEG sensor - requiring only an electrode lead for EEG monitoring and biofeedback. It can record data from up-to two sensors simultaneously.

Select Sensor Measurements for Collecting Data

This list consists of available sensors to be used with the encoder-editions in this suite.

For the **ProComp Infiniti encoder**:

- **MyoScan-Pro sensor (x 2)** is a pre-amplified surface electromyography sensor for measuring muscular tension. Uses disposable electrode pads (purchase separately)
- **EEG-Z sensors (x 2)** is pre-amplified electroencephalograph sensor with built in impedance checking, for measuring brainwaves. An **EEG monopolar/bipolar kit with DIN cable** is also necessary to use each sensor. The **2-channel connectivity kit** is also useful for linking two sensors together.
- **BVP sensor** is a blood volume pulse detection sensor (otherwise known as a PPG sensor) housed in a small finger worn package, to measure heart rate & provide BVP amplitude, BVP waveform, HR and Heart rate variability feedback.
- **Respiration sensor** is a durable, latex girth belt for monitoring respiration rate.
- **Skin Conductance** sensor measures the conductance across the skin, and is normally connected to the fingers.
- **Temperature sensor** measures skin surface temperature.

For the **ProComp 2 encoder**:

- Only **1 EEG-Z sensor**, **BVP sensor**, **Respiration sensor**, and only **1 MyoScan-Pro sensor** can be used. No skin conductance or temperature sensors.

If using the MyoScan-Pro sensor — Disposable Electrodes

The MyoScan-Pro sensor require disposable electrode pads for use. There are two potential electrode placement types, so there are also two types of electrodes for purchase. The **tri-ode** disposable electrode (A) is used for narrow placement and the **unigel** (B) for wide electrode placement.

Additional Computer Setup Information

The software suite allows (but does not require) for a dual-monitor setup for training clients. Purchase of a second monitor is required if the user wishes to take advantage of that option.

